

elcometer[®]
inspection equipment



Elcometer 408
Triple Angle Gloss & DOI Meter

Elcometer 408

Triple Angle Gloss & DOI Meter

The Elcometer 408 provides the very latest in gloss measurement technology, providing accurate gloss, haze and distinctiveness of image (DOI) analysis in a single reading.

STANDARDS:
AS/NZS 1580.602.2, ASTM C 584, ASTM D 1455, ASTM D 2457, ASTM D 4039, ASTM D 523, ASTM D 5767, ASTM E430-11, DIN 67530, ECCA T2, EN 12373-11, EN 13523-2, ISO 2813, ISO 7668, JIS K 5600-4-7, JIS Z 8741, TAPPI T 653

Press button once to measure all parameters; gloss, haze, DOI, Rspec, RIQ and Goniophotometric profiles



USB or Bluetooth® data output

On screen statistics with trend & measurement graphs

Stores up to 999 readings with full goniophotometric profiles in user definable batches

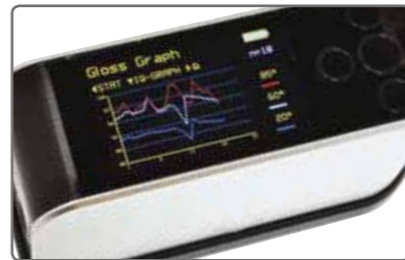
Integrated calibration tile for fully automatic error-free calibration



Easy to read large colour screen with adjustable brightness



Fast and simultaneous measurement of all parameters



On screen graph highlights trends in the measured batch

Gloss & DOI Meter Definitions

Distinctness of Image (DOI)

Distinctness of Image measures the sharpness of a reflected image in a coating surface. Similar coatings may have identical gloss values but visually the quality may be very different. A visually poor coating may have a highly textured dimpled appearance known as "orange peel". When a reflected object is viewed in such a coating the image becomes fuzzy and distorted.

A surface that has a perfect undistorted image returns a value of 100. As the value decreases the image becomes more distorted.

Haze (HU) & Log Haze (HULog)

High quality gloss surfaces have a clear, deep, brilliant finish. Haze causes a drop in reflected contrast and causes halos to appear around light sources, these unwanted effects dramatically reduce visual quality.

Undetectable by traditional gloss meters the Elcometer 408 measures Haze Units in accordance with ASTM D4039 at the same time as simultaneously measuring gloss and DOI.

Peak Reflectance (Rspec)

Rspec is the peak reflectance measured over a very narrow angle in the specular direction and is very sensitive to any surface texture, waviness or rippling. When Rspec is equal to the gloss the surface is smooth. Rspec drops as the surface texture increases.

Reflected Image Quality (RIQ)

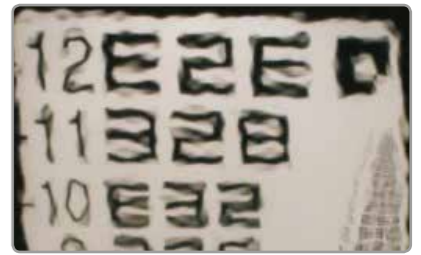
Reflected Image Quality provides greater sensitivity when evaluating highly reflective coatings and the specular / diffuse element of lower gloss materials.

A surface that exhibits a perfect undistorted image returns a value of 100, as the values decrease higher surface texture is present and the image sharpness reduced.

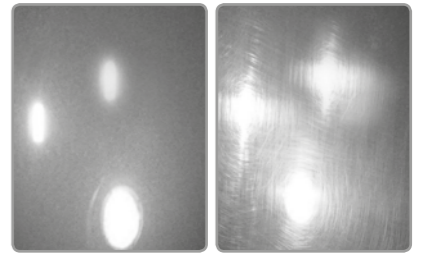
Goniophotometric Profile

The gloss, haze, DOI and Rspec values produced by the Elcometer 408 can be used to assess the visual quality of any surface. The full range of goniophotometric curves can be downloaded to a computer for detailed understanding of specular reflectance. The Elcometer 408 can also be used to quantify an orange peel finish or a substandard coating with a low DOI.

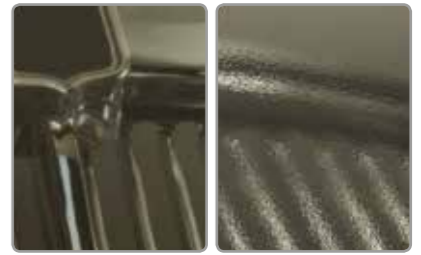
Elcometer 408



Distinctiveness of Image (DOI)



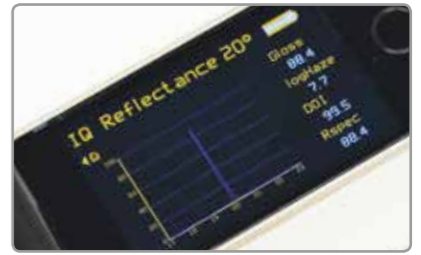
Haze (HU) & Haze Log (HULog)



Peak Reflectance (Rspec)



Reflected Image Quality (RIQ)



Goniophotometric Profile

Elcometer 408 Triple Angle Gloss & DOI Meter

Accurate

- Fast and simultaneous measurement of gloss, haze, DOI, Rspec, RIQ and Goniophotometric profiles
- Each instrument is supplied with a Calibration Certificate

Simple

- Bright, easy to read LCD screen displays the gloss value, statistics & graphs
- Display measurements are user definable
- Each set of readings is time & date stamped

Flexible

- Triple (20/60/85°) angle for maximum accuracy and resolution in all gloss applications
- Bluetooth® or USB download to ElcoMaster™ data management software for instant analysis

Durable

- Robust aluminium construction ensures optical stability
- 17hrs+ continuous operation or 20,000+ readings
- Compact & portable instrument with integrated tile holder

Efficient

- Easy menu-driven user interface in multiple languages
- Clear, illuminated display showing up to five parameters on screen
- On board trend analysis with gloss and image quality (IQ) values

Powerful

- On board memory for 999 readings with full goniophotometric profiles
- Internal battery is fully rechargeable in 2.5 hours



Paperless Quality Assurance with ElcoMaster™



Triple Angle Gloss & DOI Meter

Elcometer 408

Product Features

Easy to use menu structure	English, Spanish, French, Italian, German, Chinese
Bright colour screen; <i>with permanent back light</i>	Adjustable brightness, 6 button touch sensitive interface
User definable measurement display	■
Scratch & solvent resistant display	■
USB power supply	■
Calibration certificate	■
Data output	■
USB; <i>to PC</i>	■
Bluetooth®: <i>to PC or Android™ mobile device#</i>	■
On screen statistics	\bar{x} , σ , maximum & minimum value
ElcoMaster™ software & USB cable	■
Date and time stamp	■
Gauge memory; <i>number of readings</i>	up to 999 readings & curves
Repeat measurement mode	user definable: 2, 5 or 10 seconds
Delete last reading	■
Standard & fixed batch sizes	■
Trend, gloss & image graphs	■
Measurement modes	Gloss (GU): 20°, 60°, 85°*; Haze (HU) & Haze Log (HU Log); Distinctiveness of Image (DOI); Peak Reflectance (Rspec); Reflected Image Quality (RIQ) & Goniophotometric Profile

Technical Specification

Part Number	Description	Certificate			
J408-268	Elcometer 408 Triple Angle Gloss & DOI Meter (20, 60 & 85 Degree)	●			
Power Supply	Rechargeable Battery Pack				
Recharge Time	USB 4.5 hours				
Measurement Range	Gloss	Haze	DOI	RIQ	Goniophotometric
	20°: 0-2,000GU;				
	60°: 0-1,000GU;	0-2,000GU	0-100 DOI	0-100 RIQ	-
	85°: 0-150GU				
Resolution	0.1GU	0.1HU	0.1		0.1GU
Repeatability	0.2GU	0.2HU	0.2		0.2GU
Reproduceability	0.5GU	0.5HU	0.5		0.5GU
Peak Specular Reflectance at 20°	± 0.09375°				
Dimensions (H x W x D)	65 x 140 x 50mm (2.5 x 5.5 x 1.9")	Weight	790g (1lb 12oz)		
Packing List	Elcometer 408 Gloss & DOI Meter, high gloss calibration tile with calibration certificate, gloss tile cleaning cloth, transit case, USB cable, ElcoMaster™ software and operating instructions.				

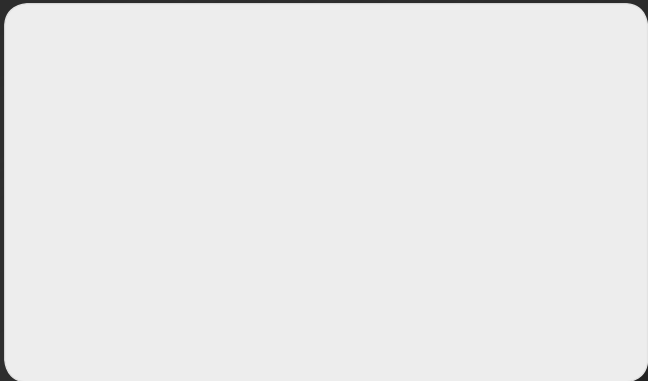
Accessories

T40823532	High Gloss Calibration Tile with Calibration Certificate
T40823533	Mirror Gloss Calibration Tile with Calibration Certificate
T99923535	Gloss Tile Cleaning Cloth
T99921325	USB Cable

● Certificate supplied as standard.

* Elcometer 408 Triple Angle Gloss & DOI Meter only

Live readings only



elcometer[®]
www.elcometer.com

ENGLAND

Elcometer Limited
Manchester M43 6BU
Tel: +44 (0)161 371 6000
Fax: +44 (0)161 371 6010
sales@elcometer.com

BELGIUM

Elcometer SA
B-4681 Hermalle /s Argenteau
Tel: +32 (0)4 379 96 10
Fax: +32 (0)4 374 06 03
be_info@elcometer.com

FRANCE

Elcometer Sarl
45380 La Chapelle-Saint-Mesmin
Tel: +33 (0)2 38 86 33 44
Fax: +33 (0)2 38 91 37 66
fr_info@elcometer.com

GERMANY

Elcometer Instruments GmbH
D-73431 Aalen
Tel: +49(0)7361 52806 0
Fax: +49(0)7361 52806 77
de_info@elcometer.de

THE NETHERLANDS

Elcometer NL
Euclideslaan 251
3584 BV Utrecht
Tel: +31 (0)30 259 1818
Fax: +31 (0)30 210 6666
nl_info@elcometer.com

JAPAN

Elcometer KK
Saint Paul Building,
6F, 5-14-11, Higashiooi,
Shinagawa-ku, Tokyo 140-0011
Tel: +81-(0)3-6869-0770
Fax: +81-(0)3-6433-1220
jp_info@elcometer.com

REPUBLIC OF SINGAPORE

Elcometer (Asia) Pte Ltd
Singapore 589472,
Tel: +65 6462 2822
Fax: +65 6462 2860
asia@elcometer.com

USA

MICHIGAN
Elcometer Inc
Rochester Hills Michigan 48309
Tel: +1 248 650 0500
Toll Free: 800 521 0635
Fax: +1 248 650 0501
inc@elcometer.com

TEXAS

Elcometer of Houston
1146 Sheffield, Unit D,
Houston, TX 77015
Tel: +1 713 450 0631
Toll Free: 800 521 0635
Fax: +1 713 450 0632
inc@elcometer.com